

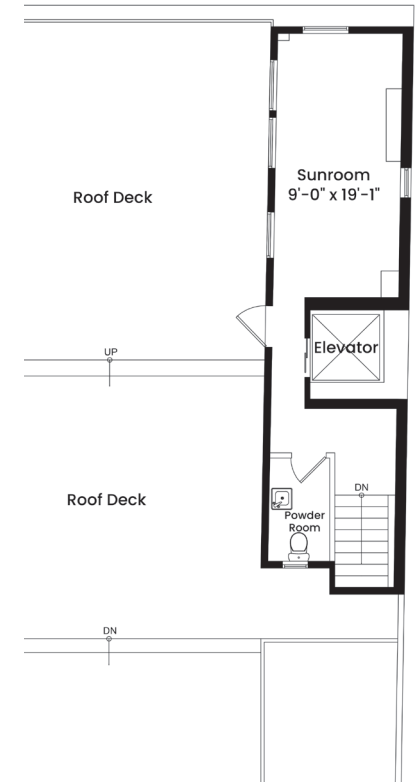
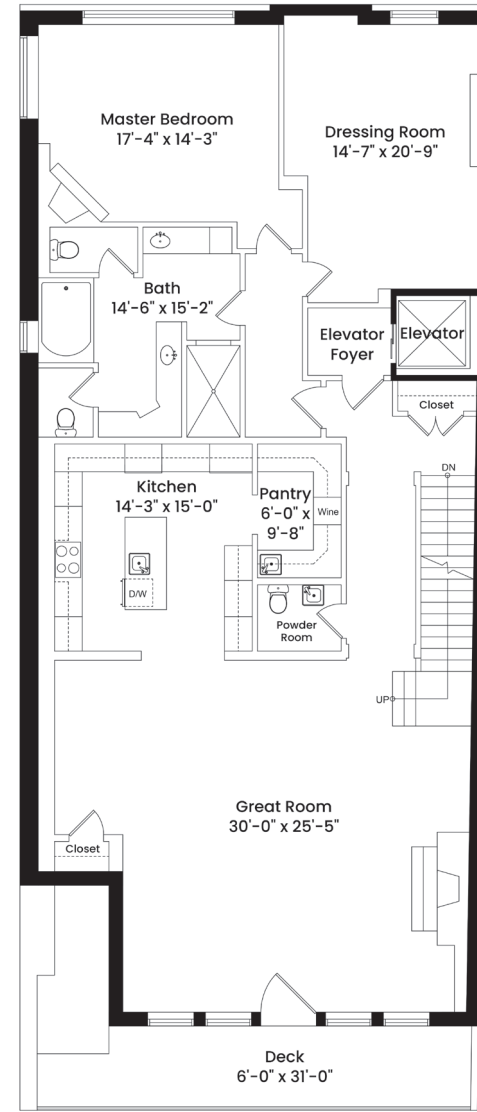
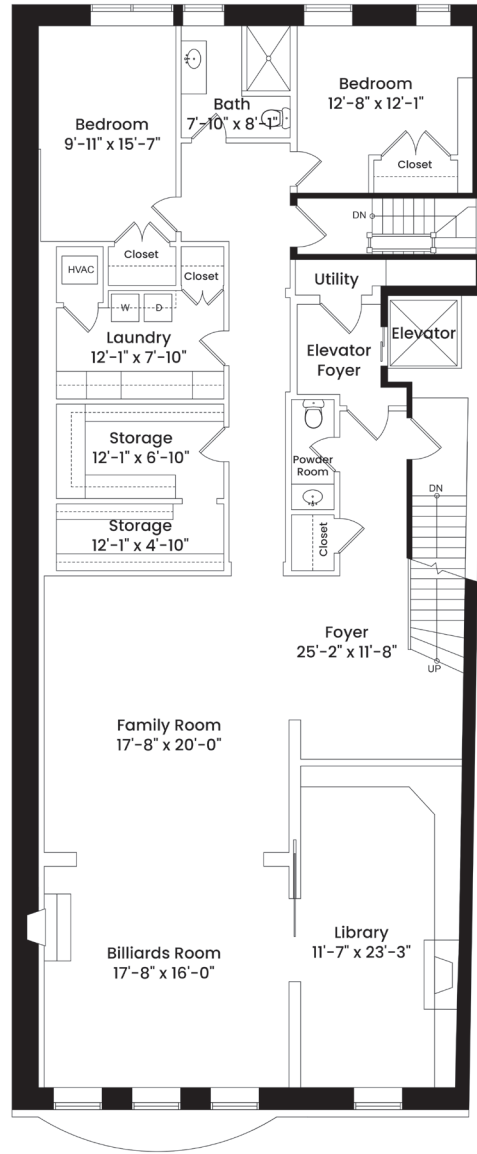


**SIGNET**  
RESIDENCES

FLOORS FIVE,  
SIX & SEVEN

3 Bedrooms  
2 Full Baths  
3 Half Baths  
Private Garage  
4,745 Sq Ft

# THE BULFINCH



63 Mount Vernon Street, Boston, MA 02108 | 617.906.6263 | [signetresidences.com](http://signetresidences.com)

NOT TO SCALE.

These are Preliminary Unit Plans. All measurements shown on these Preliminary Unit Plans are pre-construction estimates. The final unit plan with actual dimensions and square footage incorporated in the Condominium Documents may not be as shown. The position shown for the North arrow is approximate, not exact. The Seller reserves the right to make substitutions of equal or better quality to the materials and specifications without notice.

The Seller of Signet Residences is committed to the letter and spirit of U.S. policy for the achievement of equal housing opportunity throughout the Nation. We encourage and support an affirmative advertising and marketing program in which there are no barriers to obtaining housing because of race, color, religion, sex, handicap, familial status, or national origin.

